

C200EC2016/B0



 **SonoStar**™

New Tech, New Life

C200

Trolley Color Doppler Ultrasound System

- High definition clear image
- 15inch Screen LED Screen
- Built-in Battery
- 3D/4D imaging(option)
- Support phased array probe(option)
- Abundant functions, Multilingual
- Hardisk, USB storage
- Generous and exquisite appearance

High definition image!



More information...
please browse www.sonostar.net



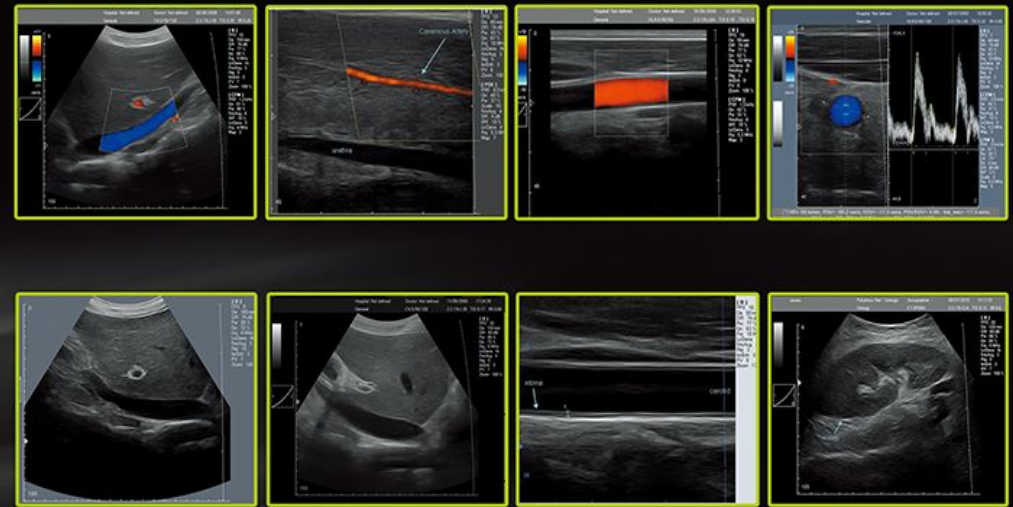
Sonostar Technologies Co., Limited

Address: 504#, C Building, #27 Yayingshi Road, Science Town, Guangzhou
Tel: +86-20-32382095 Fax: +86-20-62614030 Skype: sonostar-ut
www.sonostar.net Email: sales@sonostar.net MSN: sonostar@163.com

Note: Sonostar trademarks is protected by Madrid Treaty.

 **SonoStar**®





Specifications:

1) Imaging Modes:

B, BJB, 4B, BJM, M
 Color Doppler (CFM)
 Power Doppler (PDI)
 Directional Power Doppler (DPDI)
 Pulsed Wave Doppler (PWD)
 B+PWD (Duplex)
 B+CFM/PDI/DPDI+PWD (Triplex)
 High Pulse Repetition Frequency (HPRF)
 Tissue Harmonic Imaging (THI)

2) Scanning Method: electronic linear, electronic convex, electronic microconvex, scanning depth: 2-24cm

3) Color Doppler:

PRF variable: 0.5-9 kHz
 wall filter settings: 3 steps (5%, 10%, 15% PRF)
 angle steering for linear transducers: $\pm 10^\circ$
 real-time spatial filter: 4 values
 CFM palette > 10 maps
 PDI palette > 10 maps
 B/Color priority control
 Color threshold control
 CFM baseline control
 Doppler frequency selection color frame averaging
 Transparent Color Mapping (TCM)

4) Pulsed Wave Doppler:

PRF variable: 1-10 kHz
 wall filter settings: 16 steps (2.5%-20% PRF)
 angle steering for linear transducers: $\pm 10^\circ$
 real-time trace line with automatic calculation of spectrum parameters
 stereo sound: volume control
 PWD palette > 10 maps
 Doppler frequency selection

5) Processing:

High Line Density scan mode for better resolution
 8 sliders TGC Control
 dynamic range > 120 dB
 overall gain control
 M - mode sweep speed control
 acoustic power control
 variable frame averaging
 brightness, contrast
 advanced gamma control
 scan direction, rotation, up-down controls
 negative / positive control
 echo enhancement control
 noise rejection function
 speckle reduction

6) Image and video: AVI, JPG, BMP, PNG, TIF, DCM (DICOM)

7) General Measurements and Calculations: Distance, Length, Area, Circumference, Volume, Angle, Stenosis %, A/B Ratio, Velocity, Pressure Gradient (PG), Acceleration, Resistivity Index (RI), Heart Rate, Velocity Time Integral (VTI), etc.

8) Measurements and Calculations Software Packages: Obstetrics, Gynecology, Abdominal, Urology, Endocrinology, Vascular, Cardiology, etc.

9) Expansion interfaces:

VGA, TV Interface
 USB2.0 Interface
 RJ-45 Network interface (DICOM)
 Support DeskJet printer, LaserJet printer, video printer

10) Built-in battery work time: 2 hours

11) Probe socket: 2/4

12) Screen: 15 inch touch screen

13) Size: 582mm*526mm*126mm

14) Weight: 80Kg

Standard Configuration:

Host 1 unit and Convex probe 1 pcs;

Optional:

Linear, Trans-vaginal, Micro-convex, Rectal, Phased array probe; 3D imaging software; 4D probe and imaging software; Trolley; Laser Printer; Video Printer