



# C500

Color Doppler System

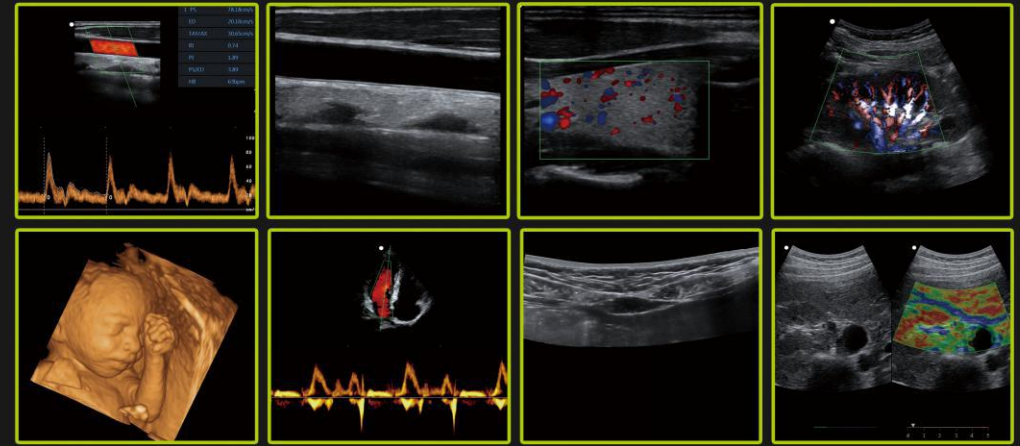


## Sonostar Technologies Co., Limited

Address: C Building, #27 Yayingshi Road, Science Town, Guangzhou, China  
Parts Factory: #31 Dashuiwan Road, Xiangzhou, Zhuhai, Guangzhou, China  
Tel:+86-20-32382095 Fax:+86-20-62614030 Skype:sonostar-ut  
www.sonostar.com Mail:sales@sonostar.net MSN:sonostar@163.com



[www.sonostar.com](http://www.sonostar.com)



#### Feature:

- Top configuration, advanced imaging technology, extremely clear and delicate image
- Complete imaging, display modes and functions including anatomical M imaging, wide-field imaging, elastography, etc
- Support phased array, 4D and other probes
- Rich and powerful measurement function
- High cost performance



#### Specifications:

**-Imaging technology:** Pulsed Inverted Harmonic Imaging, Filtering Harmonic Imaging, Harmonic Fusion Imaging, Multi-Beam Combining, Spatial Composition, Adaptive Blur Suppression, 14-bit A / D Converting to 60M / s Sampling Rate, point by point dynamic focus and dynamic aperture technology, synthetic aperture technology

**-Imaging modes:** B, M, Color Doppler, Power Doppler imaging (PDI), Pulse Wave (PW), Anatomy M-mode imaging, Blood flow motion mode imaging (MC), Wide-field imaging, elastography, strain rate imaging, Tissue Doppler imaging (TDI), Directional Power Doppler imaging (DPDI), parallelogram imaging, trapezoidal imaging, B / C / D real-time triplex imaging, real-time four-dimensional imaging (4D) (optional), Continuous Wave Doppler imaging (CW) (optional)

**-Imaging display modes:** B, 2B, 4B, B + M, BCM, B + Color, B + PDI, B + DPDI, B + PW, B + Color + PW, B + PDI + PW, B + DPDI + PW, B + C / PDI / DPDI dual real-time, B / SRI dual real-time, B + AMM, B + E, CW, 4D

**-Transducers:** Convex probe, Linear probe, Intracavitary probe, Micro-convex probe, Cardiac probe, 4D Abdominal probe, 4D Intracavitary probe

**-Transducer frequency and frequency conversion:** 2.0-12.0MHz, B / M mode 5 files fundamental frequency + 2 files harmonic frequency, Color mode 3 files, PW mode 2 files

**-Transducer connector:** 4

**-Cine Loop:** B mode  $\geq 1000$  frames, Color and PDI mode  $\geq 500$  frames, time line mode (M, PW)  $\geq 200$ s

**-Image magnification:** Real-time Scan (B, B + C, 2B, 4B) Status or Level 5 magnification in Freeze status.

**-Image Storage:** JPG, BMP and AVI, local storage, DICOM, conform DICOM3.0 standards

**-Built-in workstation:** support for large-capacity hard disk ( $\geq 500$ GB), support for patient data retrieval and browsing

**-Multilanguage support:** Chinese / English operating system, support for other languages according to user requirements, full screen Chinese and English annotation input

#### -Imaging specification:

**B mode:** grayscale mapping  $\geq 20$  files, pseudo color  $\geq 6$  files, noise suppression  $\geq 5$  files, frame correlation  $\geq 4$  files, edge enhancement  $\geq 5$  files, speckle suppression  $\geq 5$  files, image style adjustable, Space composite three gears adjustable, Sound power adjustable, Dynamic range adjustable, high and low scanning density adjustable, image flip up and down adjustable, maximum scanning depth  $\geq 360$ mm

**M mode:** Sweep Sleep  $\geq 5$  files adjustable, afterglow  $\geq 5$  files, sampling volume adjustable, pseudo color  $\geq 6$  files, edge enhancement  $\geq 4$  files, Sound power adjustable

**PW mode:** SV size 0.5-30.0mm adjustable, PRF  $\geq 32$  files 0.2kHz - 20kHz adjustable, Sweep Sleep  $\geq 5$  files adjustable, Correction Angle  $-72^\circ \sim 72^\circ$  Step  $2^\circ$ , baseline position adjustable, wall filter  $\geq 9$  files adjustable, Doppler sound  $\geq 10$  files, smooth  $\geq 4$  files, sound power adjustable, frequency adjustable

**Color / PDI / DPDI mode:** PRF  $\geq 32$  files 0.2kHz-20kHz, color map  $\geq 20$  kinds, frame correlation  $\geq 4$  files, smooth  $\geq 4$  files, linear density in low, medium and high adjustable, frequency adjustable, sound power adjustable, frame rate adjustable, wall filter  $\geq 6$  files, blood flow priority  $\geq 8$  file, sampling packets 6/8/10/12/16/20/24, speed through  $\geq 8$  files, B suppression  $\geq 8$  files

#### -Measurement and calculation:

**B / C Mode Routine Measurements:** Distance, Area, Perimeter, Ellipse, Crosshairs, Volume, Volume (Ellipse), Angle, Area Ratio, Distance Ratio, Joint Angle

**M mode Routine measurements:** time, slope, heart rate, distance

**Doppler mode Routine measurements:** heart rate, flow rate, acceleration, resistance index, pulsatility index, automatic envelope, manual envelope, S / D, time

**Obstetrics B, PW mode application measurement:** including comprehensive obstetrical diameter measurement, weight, single gestational age, amniotic fluid index, etc.

Gynecological B-mode application measurement

Heart B, M, PW mode application measurement

Vascular B, PW mode applications measure and support auto-measurement of carotid intima (IMT)

Small Organs B-mode application measurement

Urinary B- mode application measurement

Abdominal B-mode application measurement

