

SS-10VEC2012/B0



More information, please browse www.sonostar.net

Sonostar Technologies Co., Limited

Factory: First floor, Investment Building, Nanping, Zhuhai, Guangdong, China
Market Center: 302#, Entrepreneurship Building, Yushu, Science city, Guangzhou
Tel: +86-20-32382095 Fax: +86-20-62614030 Skype: sonostar-ut
www.sonostar.net Mail: sonostar@sonostar.net MSN: sonostar@163.com

Note: Sonostar trademarks is protected by Madrid Treaty.

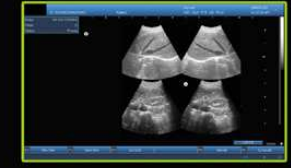


computer platforms!



SS-10V Laptop Ultrasound Scanner

- 10.4 inch LED screen, pretty, portable and light
- 2 probe connector
- Full digital imaging technology, crystal-clear Image
- 3D Image function(optional)
- PC based, abundant functions
- Powerful image and report management
- Large volume storage image and cineloop
- DICOM display and transfer
- Compatible with laser/inkjet printers
- Outside battery(option)



Specification:

- Maximum Scanning Depth: max. 250mm
- Cine Loop: max. 1024 frames
- Real-time Zoom on B mode
- Image processing: Pre-processing, after-processing, dynamic range, frame rate, line average, edge; enhancement, Black/White inversion; Gray scale adjustment, contrast, brightness, γ revision.
- Gain: 0-100dB; Time gain control(TGC): 8 segment adjustment, B, M adjustment separately.
- Measurement and calculation(human):
 - B mode: distance, circumference, area, volume, angle, ratio, stenosis, profile, histogram;
 - M mode: heart rate, time, distance, slope and stenosis;
 - Gynecology measurement: Uterus, cervix, endometrium, L/R ovary;
 - Obstetric: gestation age, fetal weight, AFI;
 - Cardiology: LV, LV function, LVPW, RVAWT;
 - Urology: transition zone volume, bladder volume, RUV, prostate, kidney;
 - Small parts: optic, thyroid, jaw and face.
- Veterinary: Cattle: BPD, CRL, TD; Horse: GA; Dog: GS; Cat: HD, BD; Sheep: BPD, CRL, TD
- Supported output apparatus: U-Disk, Laser/ink printer, video printer, VGA
- Zoom: 10 ratio, 1.5, 2.0, 2.5, 3.0, 3.5, 4.0, 4.5, 5.0, 5.5, 6.0
- Image store: by hardisk or USB disk
- 3D image function: can get rebuilt 3D image by any probe
- Work time by battery: about 2 hours
- Monitor: 10.4 inch color LED screen
- Dimension: 8cm(height) \times 23cm (width) \times 30cm(length)
- Weight: Around 2.3kg
- Multi-frequency: 5 segment frequencies
- Scanning mode: B, 2B, B/M, M, 4B, 9B, ZOOM;
- Image gray scale: 256 level gray scale
- Probe Connector 2



Can change to silicone waterproof keyboard, easy to clean and disinfect