

SS-8EC2015/A0



More information, please browse [www.sonostar.net](http://www.sonostar.net)

### Sonostar Technologies Co., Limited

Headquarters: C Building, #27 Yayingshi Road, Science Town, Guangzhou, China  
 Parts Factory: First floor, Investment Building, Nanping, Zhuhai, Guangdong  
 Tel: +86-20-32382095 Fax: +86-20-62614030 Skype: sonostar-ut  
[www.sonostar.net](http://www.sonostar.net) Mail: [sonostar@sonostar.net](mailto:sonostar@sonostar.net) MSN: [sonostar@163.com](mailto:sonostar@163.com)

Note: Sonostar trademarks is protected by Madrid Treaty.



New Tech, New Life

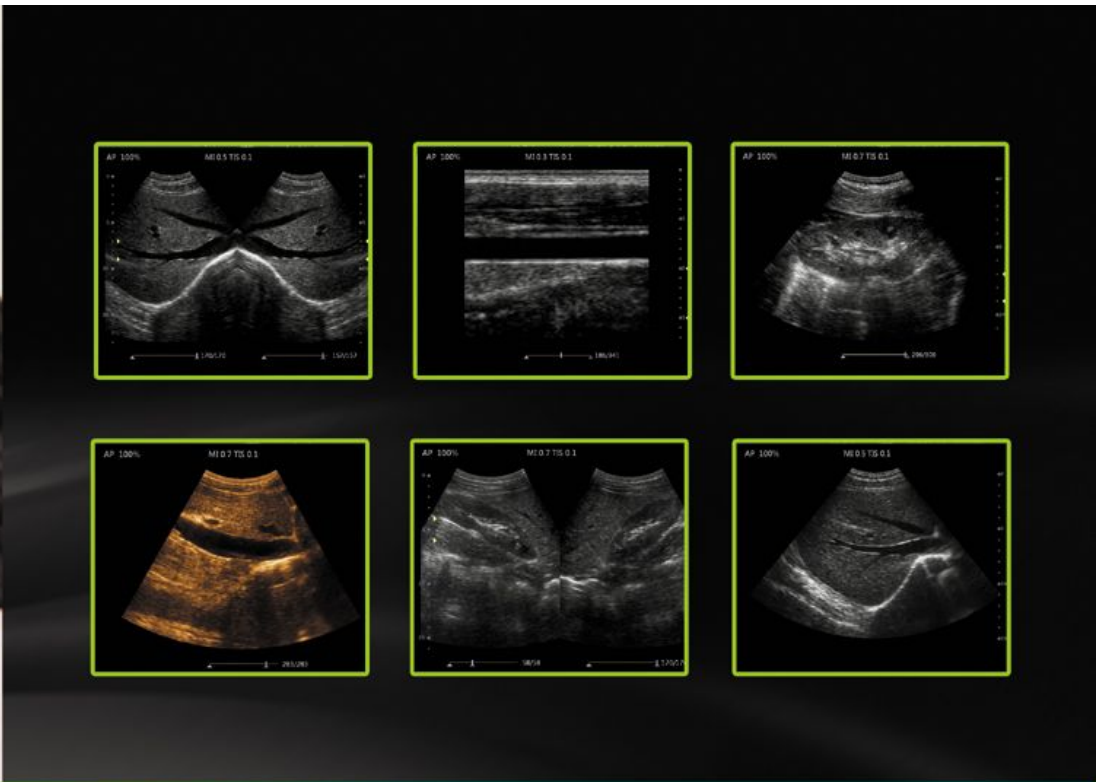
*Smart & Good Image!*



# SS-8

## Laptop Ultrasound Scanner

- 15 inch LCD screen
- Full digital imaging technology, crystal-clear Image
- Pretty and light
- High Cost-effective
- Broadband multi-frequency probes
- 2 probe connector
- Silica gel backlight gravure laser keyboard
- ARM system powerful function, include report, can work with laser printer
- Built-in battery(can work more than 3 hours)



Arm system, powerful function

Also can customized the color, such as white & gray

**Standard configuration:**

One host, one convex probe, one aluminum trunk

**Optional:**

Transvaginal, linear, rectal, micro-convex probe; Biopsy; Trolley; Video printer; Laser printer.



**Specification:**

- Image mode: B,M,2B,B/M,4B
- Display: 15"LCD monitor
- Digital technology: Wide-angle imaging, Panoramic focusing technology, Rolling M technology
- Scanning depth: 300mm
- Imaging Pre-processing: Cloud processing technology, 8-segment TGC, Gain(B&W), Dynamic range, Persistence, M Soften, Noise suppression
- Imaging Post-processing: Image enhancement, Gray Map, Colorize Map, Tissue Specific Imaging, Left/right reverse, Up/down reverse
- Cine-loop: 334 frame cine loop memory
- THI: Tissue Harmonic Imaging
- Store: built-in 8G memory
- Print: by video printer, or by laser printer
- Measurement & Calculations:
  - B mode: Distance, angle, area, volume, trace length, distance ratio
  - M mode: Distance, time, slope, HR
- Transducer connector: 2
- Peripheral ports: 1 BNC video port, 2 USB ports, 1 networking-port, 1 power inlet port
- Power supply: AC 100-240V 50/60HZ <80VA.
- Overall size: 362mm×340mm×60mm
- Gray scale: 256 gray, and pseudo color
- Transducer frequency: 2MHz~11MHz
- Zoom: Pan zoom
- Optimize
- Communication: DICOM 3.0
- Report edit function
- Built-in battery: work 3 hours
- Total weight: 3.5Kg