



## Specification of SS-8V

### Parameters

- Scanning depth:** Maximum $\geq$ 180mm.
- Resolution:**
  - Lateral resolution: 4 Depth $\leq$ 80mm, resolution $\leq$ 2mm; 5 80mm $<$ Depth $\leq$ 130mm, resolution $\leq$ 3mm;
  - 6 130mm $<$ Depth $\leq$ 160mm, resolution $\leq$ 4mm.
  - Axial resolution: 2 Depth $\leq$ 130mm, resolution $\leq$ 1mm; 3 130mm $<$ Depth $\leq$ 170mm, resolution $\leq$ 2mm.
- Precision of geometry structure:** Lateral:  $\leq$ 10%; longitudinal:  $\leq$ 5%.
- Blind region:**  $\leq$ 3mm.
- Transducer connector:**  $\geq$ 2;
- Supported output apparatus:** 2 USB devices; Digital printer, video printer, VCR
- Monitor:** 10 inch non-interlaced high-resolution monitor
- Dimension:** 25cm(height) $\times$ 25cm (width)  $\times$ 45cm(length)
- Weight:** Around 16kg
- Scanning mode:** B, 2B, B/M, M, 4B, ZOOM; Real-time Zoom on B mode
- Image gray scale:** 256 level gray scale
- Image processing:** Pre-processing, after-processing, dynamic range, frame rate, line average, edge; enhancement, Black/White inversion; Gray scale adjustment, contrast, brightness,  $\gamma$  revision.
- Gain:** gain: adjustable between 0~100dB; Time gain control(TGC): 8 segment adjustment, B, M adjustment separately.
- Cine loop:** 64, 128, 256, 512frame, Auto/manual cine loop
- Measurement and calculation:**
  - B mode: distance, circumference, area, volume, angle, ratio, stenosis, profile, histogram;
  - M mode: heart rate, time, distance, slope and stenosis;
  - Gynecology measurement: Uterus, cervix, endometrium, L/R ovary;
  - Obstetric: gestation age, fetal weight, AFI; Cattle: BPD, CRL, TD; Horse: GA; Dog: GS; Cat: HD, BD; Sheep: BPD, CRL, TD
  - Cardiology: LV, LV function, LVPW, RVAWT;
  - Urology: transition zone volume, bladder volume, RUV, prostate, kidney;
  - Small parts: optic, thyroid, jaw and face.
- Storage:** Image storage, cine loop, storage capacity $\geq$ 80G. Measurement result and report can be stored.
- Patient information management:** Diagnosis case management, report print, comment library, image output (USB) , import data.
- Comments:** comment, body mark(16 kinds for different parts), arrow.
- Zoom:** 10 ratio, 1.5, 2.0, 2.5, 3.0, 3.5, 4.0, 4.5, 5.0, 5.5, 6.0
- Multi-frequency:** 5 segment frequencies
- Scanning by angle:** 12 angle scanning
- Image direction:** Up/down/left/right
- Dynamic range(contrast):** Continuous adjustable: 0~100dB.
- Real-time Ethernet transmission(option):** This option allows real-time transmission by Ethernet.



Ethernet-capable allows local and internet ultrasound data transmission.

- **System preset:** System preset includes parameter presets of OB, GYN, vascular, cardiac, urology and small parts, comments, manufacture default settings, system upgrade and maintenance settings.

## **System configuration**

- **Standard configuration:**

Main unit 1 unit

Accessories:

Veterinary probe: central frequency 3.5 MHz or 5 MHz;

Gel 1

Cable hanger 1

Dust-proof cover 1

User manual 1

Power cable 1

Fuse wire 3

- **Options:**

a) Ultrasound report software: edit and print standard ultrasound report

b) DICOM3.0, medical digital imaging and communication, is the industry standards (agreement) of image and data transmission among different kinds of medical devices. Ultrasound devices could receive images and data by DICOM after being connected to PACS.

c) Cine loop(64, 128, 256, 512 frames)

d) Real-time ethernet transmission

e) Tissue harmonic imaging

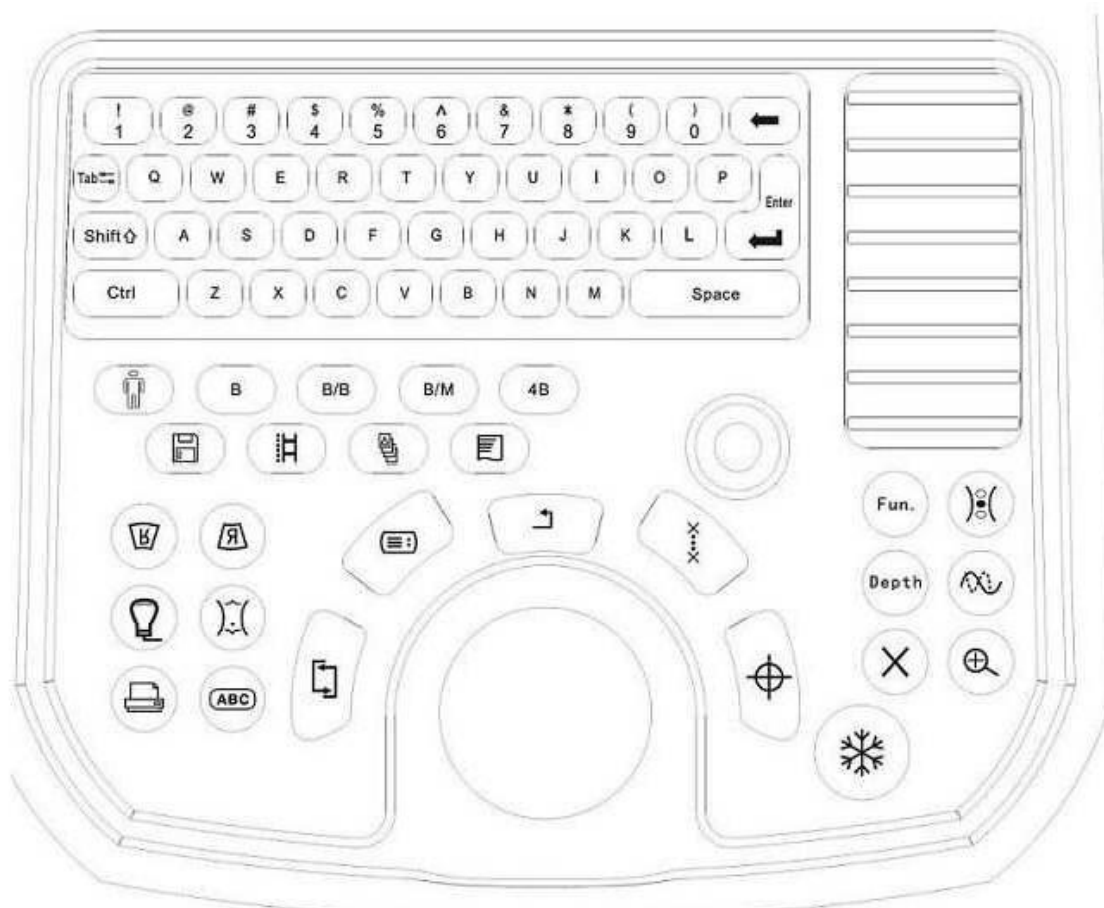
f) R/W CD room(This system is Not used)

g) BW video printer

h) Footswitch(freeze/ user-define)

i) Maintenance tools

j) Video apparatus



**Sonostar Technologies Co., Limited**

Web: <http://www.sonostar.net>

Mail: [sonostar@sonostar.net](mailto:sonostar@sonostar.net)

MSN: [sonostar@163.com](mailto:sonostar@163.com)

Skype: sonostar-ut