

UBook-8EC2016/A0



 **SonoStar**™

New Tech, New Life

Small & smart!



- ✓ Primary care
- ✓ Home care
- ✓ Outdoor diagnosis



UBook-8 Laptop Ultrasound Scanner

- Full digital imaging technology, crystal-clear Image
- Abundant functions, powerful report management
 - 12 inch LCD screen, Pretty, portable and light
 - Large volume storage image and cineloop
 - Wifi DICOM display and transfer
 - Compatible with laser/inkjet printers



More information...
please browse www.sonostar.com

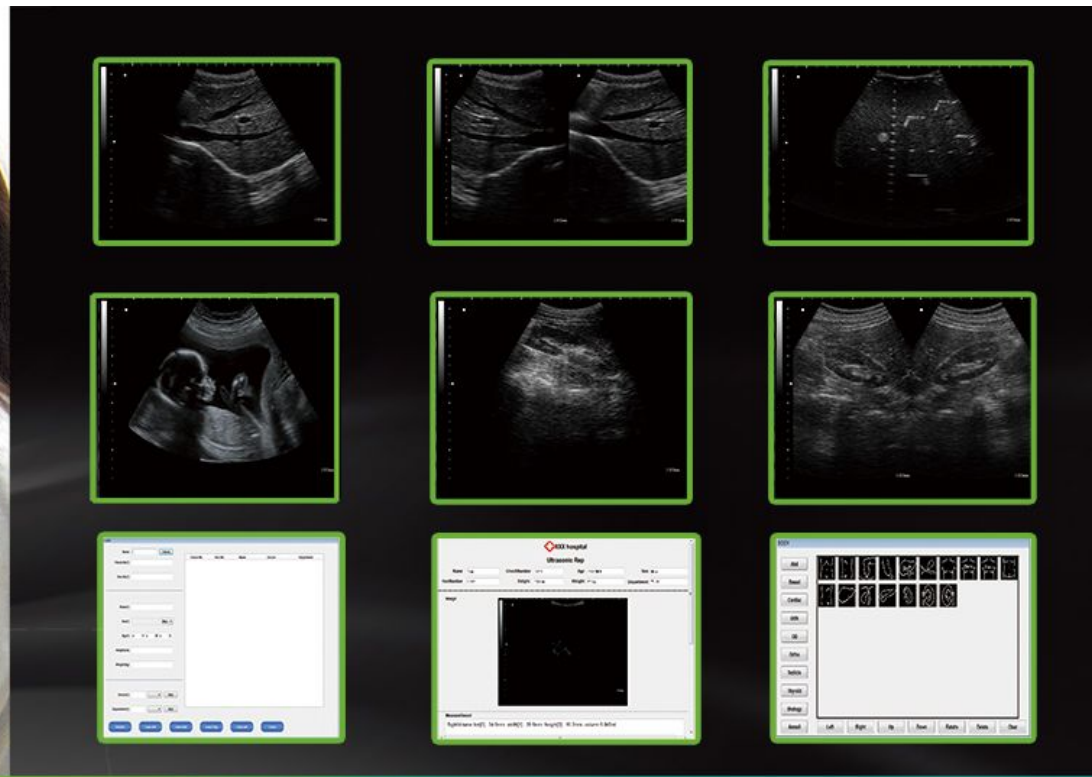


Sonostar Technologies Co., Limited

Address: 504#, C Building, #27 Yayingshi Road, Science Town, Guangzhou
Tel: +86-20-32382095 Fax: +86-20-62614030 Skype: sonostar-ut
www.sonostar.com Email: sales@sonostar.net MSN: sonostar@163.com

Note: Sonostar trademarks is protected by Madrid Treaty.





Also have white case version!

Standard Configuration:

- Host(windows laptop) 1 unit
- Convex probe(R60, 3.5MHz) 1pcs
- Power adapter and charger 1pcs

Optional:

- Linear, trans-vaginal, micro-convex, rectal USB probe
- USB laser/ink printer, video printer
- USB to VGA adapter
- Ultrasound keyboard

Specification:

- Maximum Scanning Depth: max. 250mm.
- Cine Loop: max. 1024 frames.
- Scanning mode: B, 2B, B/M, M, 4B, ZOOM, Real-time Zoom on B mode.
- Image processing: Pre-processing, after-processing, dynamic range, frame rate, line average, edge, enhancement, Black/White inversion; Gray scale adjustment, contrast, brightness, γ revision.
- Multi-frequency: 5 segment frequencies.
- Image gray scale: 256 level gray scale.

- Gain: 0-100dB; Time gain control(TGC): 8 segment adjustment, B, M adjustment separately.
- Measurement and calculation(human):
B mode: distance, circumference, area, volume, angle, ratio, stenosis, profile, histogram.
M mode: heart rate, time, distance, slope and stenosis.
- Gynecology measurement:
Obstetric: gestation age(AC,BPD,CRL,FL,THD,GS,OFD,TIBIA,HC,TAD,FTA), fetal weight, AFI.
Cardiology: LV, LV function, LVPW, RVAWT. Small parts: optic, thyroid, jaw and face.
Urology: transition zone volume, bladder volume, RUV, prostate, kidney.
Veterinary: Cattle: BPD, CRL, TD; Horse: GA; Dog: GS; Cat: HD, BD.
Sheep: BPD, CRL, TD.
- Supported output apparatus: U-Disk, Laser/ink printer, video printer, external screen.
- Zoom: 10 ratio, 1.5, 2.0, 2.5, 3.0, 3.5, 4.0, 4.5, 5.0, 5.5, 6.0.
- Image store: by hardisk or USB disk.
- Work time by battery: about 2 hours Monitor: 12 inch screen
- Dimension of tablet: 1.3cm(height) \times 19.7cm (width) \times 29cm(length)
- Probe Connector: 1(USB port)

