

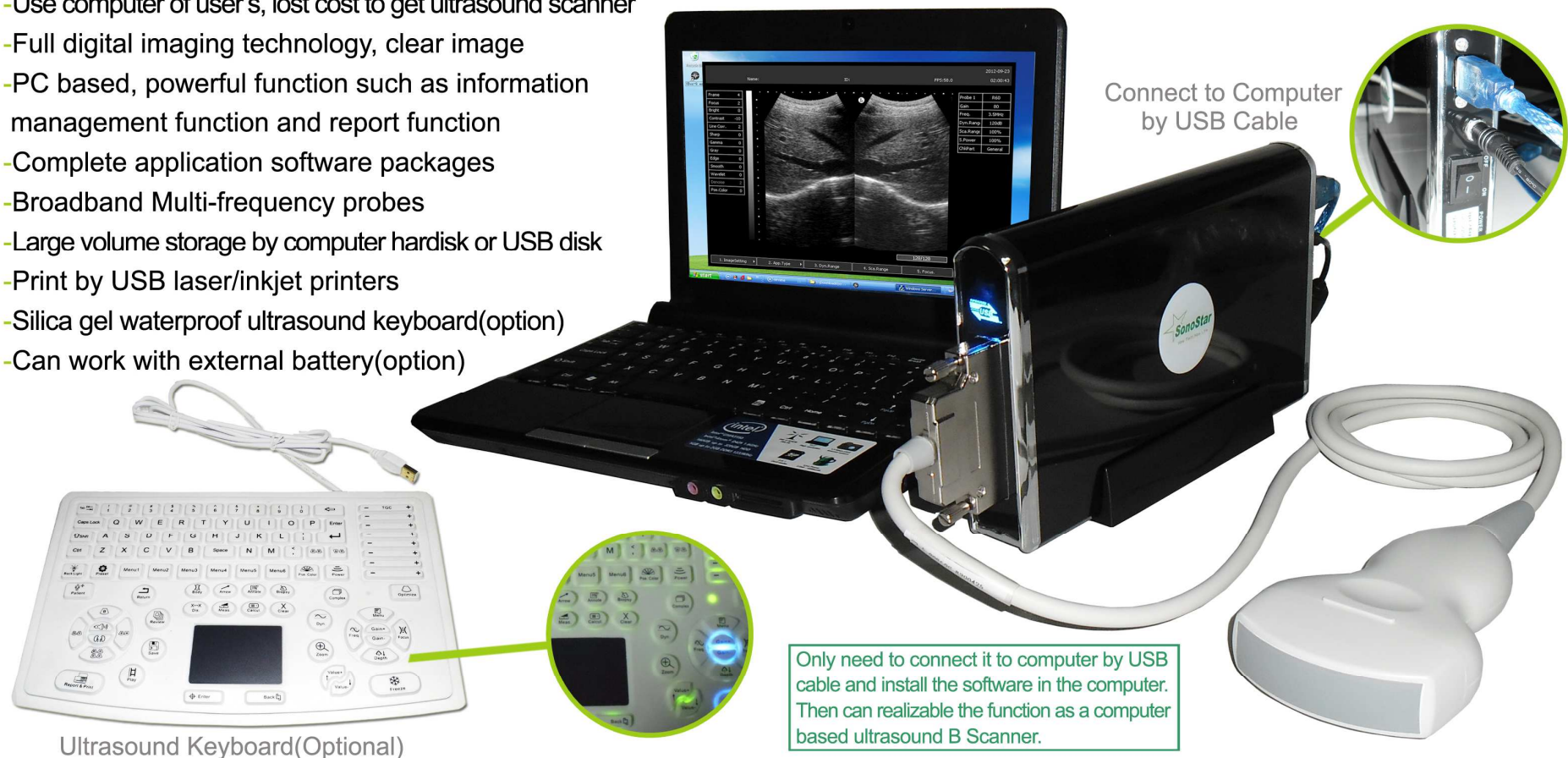


Dedicated to the popularization of ultrasonic technology

UBox-9 Ultrasound Box

- Very small and light, easy to carry
- Use computer of user's, lost cost to get ultrasound scanner
- Full digital imaging technology, clear image
- PC based, powerful function such as information management function and report function
- Complete application software packages
- Broadband Multi-frequency probes
- Large volume storage by computer hardisk or USB disk
- Print by USB laser/inkjet printers
- Silica gel waterproof ultrasound keyboard(option)
- Can work with external battery(option)

Can work with any windows computer!



Specification:

- Operation system: windows XP or windows 7
- D-Maximum Scanning Depth: max. 250mm
- Multi-frequency: 5 segment frequencies
- Zoom: 10 ratio, 1.5, 2.0, 2.5, 3.0, 3.5, 4.0, 4.5, 5.0, 5.5, 6.0
- Image gray scale: 256 level gray scale
- Cine Loop: max. 1024 frames
- Scann mode: B, 2B, B/M, M, 4B, 9B, ZOOM(Real-time zoom on B mode)
- Image processing: Pre-processing, after-processing, dynamic range, frame rate, line average, edge; enhancement, Black/White inversion; Gray scale adjustment, contrast, brightness, γ revision.
- Measurement and calculation(human):
B mode: distance, circumference, area, volume, angle, ratio, stenosis, profile, histogram;
M mode: heart rate, time, distance, slope and stenosis;
Gynecology measurement: Uterus, cervix, endometrium, L/R ovary;
Obstetric: gestation age, fetal weight, AFI;
Cardiology: LV, LV function, LVPW, RVAWT;
Urology: transition zone volume, bladder volume, RUV, prostate, kidney;
Small parts: optic, thyroid, jaw and face.
- Measurement and calculation(veterinary): Cattle: BPD, CRL, TD;
Horse: GA; Dog: GS; Cat: HD, BD; Sheep: BPD, CRL, TD
- Image store: by computer harddisk or USB disk
- Print: by USB laser/inkjet printers with computer
- DICOM3.0, medical digital imaging and communication
- Weight: with one probe around 1kg
- Dimension: 200mm×140mm×35mm
- Work time by battery(optional): about 3 hours
- Probe Connector: 1

Standard Configuration: Ultrasound Box, USB connect cable, Convex probe(R60, 3.5MHz), Power adapter, CD with ultrasound software, Manual.

Optional: Linear, Trans-vaginal, Micro-convex Probe; Computer, Battery

